

KUEBLER - ABSOLUTE ENCODED ANGULAR TRANSMITTER SENDIX F5858 / F5878, OPTICAL, ETHERNET / IP, Ø58 MM

SERIE F5858

- Housing diameter Ø58 mm
- EtherNet/IP
- Safety-Lock™
- Quick startup



PRODUCT DESCRIPTION

Sendix F5858 / F5878 is a one-way fieldbus transducer with EtherNet / IP in robust design. Thanks to the construction of Safety-Lock™ as well as the fully cast housing, the sensor is able to handle even the more demanding applications where there are high demands on the sensor. The wide temperature range combined with the high enclosure class allows the sensor to be used outdoors as well as applications where large temperature changes occur. Sendix F5858 / F5878 comes with LED indication which facilitates diagnosis of the sensor.

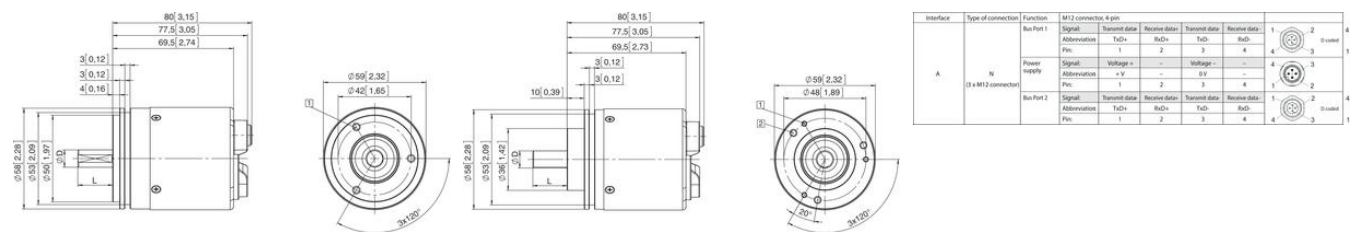
Please refer to the image below for ordering information.

Order code	8.F5858	.XXAN.	A222	
Shaft version	Type	a	b	c
a Flange				
1 = clamping flange, IP65 ø 58 mm [2.28"]				
2 = synchro flange, IP65 ø 58 mm [2.28"]				
5 = square flange, IP65 □ 63.5 mm [2.5"]				
b Shaft (ø x L), with flat				
1 = 6 x 10 mm [0.24 x 0.39"]				
2 = 10 x 20 mm [0.39 x 0.79"]				
3 = 1/4" x 7/8"				
4 = 3/8" x 7/8"				
c Interface / Power supply				
A = EtherNet IP / 10 ... 30 V DC				
d Type of connection				
N = 3 x axial M12 connector, 4-pin				
e Fieldbus profile				
A2 = EtherNet/IP				
				Optional on request - Ex 2/22

Order code	8.F5878	.XXAN.	A222	
Hollow version	Type	a	b	c
a Flange				
1 = with spring element long, IP65				
3 = with stator coupling, IP65 ø 65 mm [2.56"]				
5 = with stator coupling, IP65 ø 63 mm [2.48"]				
b Blind hollow shaft (insertion depth max. 30 mm [1.18"])				
A = ø 10 mm [0.39"]				
B = ø 12 mm [0.47"]				
C = ø 14 mm [0.55"]				
D = ø 15 mm [0.59"]				
E = ø 3/8"				
F = ø 1/2"				
c Interface / Power supply				
A = EtherNet IP / 10 ... 30 V DC				
d Type of connection				
N = 3 x axial M12 connector, 4-pin				
e Fieldbus profile				
A2 = EtherNet/IP				
				Optional on request - Ex 2/22

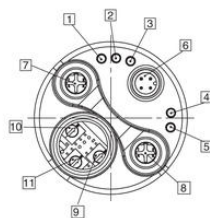
TECHNICAL DATA

Connection	M12
Housing diameter	58 mm
IP class	IP65
Mounting	Shoulder
Output	EtherNet/IP
Sensor type	Absolute
Shaft diameter max	10 mm
Shaft diameter min	6 mm
Supply voltage dc max	30 V DC
Supply voltage dc min	10 V DC
Temperature operational max	80 °C
Temperature operational min	-40 °C
Version	Singleturn



Rear side connections and display elements

- 1 LED: Link 1
- 2 LED: Mod.
- 3 LED: Net.
- 4 LED: Encoder
- 5 LED: Link 2
- 6 Power
- 7 Port 1
- 8 Port 2
- 9 Switch: x1
- 10 Switch: x100
- 11 Switch: x10



Interface	Type of connection	Function	M12 connector, 4 pin								
A	Bus Port 1	Signal	Transmit data	Receive data	Transmit data	Receive data	1	2	3	4	
		Abbreviations	TxD+	RxD+	TxD-	RxD-	1	2	3	4	
		Pin	1	2	3	4	1	2	3	4	
		Signal	Transmit data	Receive data	Transmit data	Receive data	1	2	3	4	
	Power supply	Abbreviations	+V	-	+V	-	1	2	3	4	
		Pin	1	2	3	4	1	2	3	4	
		Signal	Transmit data	Receive data	Transmit data	Receive data	1	2	3	4	
		Pin	1	2	3	4	1	2	3	4	